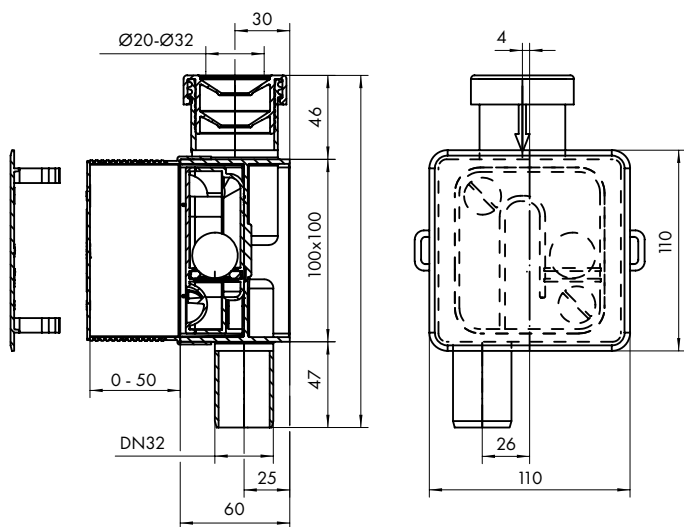


Flush-mounted trap HL138

Description

Flush-mounted trap with a ball to prevent unpleasant odours from the sewer. The adjustable mounting cover allows for installation at different wall thickness, and thanks to the rubber reduction, hoses with diameters from 20 to 32 mm can be connected to the trap.

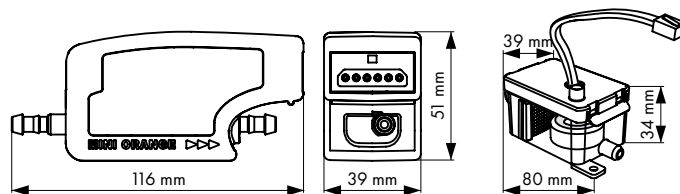
Technical drawing



Technical specifications

Material	PP/ABS	Weight	0,28 kg
Diameter	DN32	Inflow	Ø 20 - 30 mm
Throughput	120 l/h	Regulations	DIN19541

Technical drawing



Technical specifications

Power supply	230 V, 0,11 A, 16 W, 50/60 Hz
Maximum recommended lifting height	10 m
Noise level (at a distance of 1 m)	21 dB
Protection class IP	IP21
Overheating protection	Yes
Self-priming	Yes
Maximum flow rate	12 l/godz.
Maximum suction height	2 m
Maximum water temperature	40°C / 104°F
Discharge hose	6 mm ID
Safety switch	3,0 A Normally closed
Electronic components encapsulated in resin	Yes

Fungicide fluid Nanoclean Air



Description

Multi-purpose cleaning and disinfection product for surfaces, medical equipment and tools in the form of a concentrate with the smell of lavender or orchid. Capacity 1l.



Condensate pump MINI ORANGE

Description

The MINI Orange condensate pump is ideal for small commercial and domestic air conditioning devices with a maximum power of 16 kW (54 kBTU/h). Plug&Play device with anti syphon system, with a spare immersion tank as standard.

Biocidal foam Nanoclean Air Aerosol



Description

Biocidal NanoClean Air foam (aerosol) for cleaning and disinfection of surfaces and air conditioning ducts, ventilation in buildings and vehicles with a capacity of 400 ml.